



ONE VOICE ONE FAMILY

Kentucky Farm Bureau Federation
93rd Annual Meeting
December 5 - December 8, 2012



Our Mission

Kentucky Farm Bureau is a voluntary organization of farm families and their allies dedicated to serving as the voice of agriculture by identifying problems, developing solutions and taking actions which will improve net farm income, achieve better economic opportunities and enhance the quality of life for all.



Welcome

Welcome to the 93rd annual meeting of Kentucky Farm Bureau and thank you for participating in this important event! Over the next four days we will come together as “One Voice, One Family” to reflect on and celebrate the past year’s successes. We will also look ahead to prioritize our goals for the future. Those times of reflection and planning are both very important to our organization, but impossible without you, our dedicated volunteer leaders. The time and talents you so freely give to Farm Bureau are deeply appreciated and to be commended as we head into our premier event, the Annual Meeting.

The agenda on the following pages outlines the many events, activities and special interest conferences planned for this year’s Annual Meeting, and the accompanying schedules and maps are included to help you better navigate the facility. Whether you can only make it to a few activities or plan to attend them all, come ready to learn, share and partner with your fellow Farm Bureau members. This is a great way to gain useful insights from friends and peers across the state, and your participation just might help someone else walk away with new ideas that can be implemented in their community, too.

You will experience many things that are significant to the continued success of Kentucky Farm Bureau over these next four days. We will honor individuals and families who made significant contributions to Kentucky agriculture. We’ll hear motivational messages from an impressive lineup of guest speakers. We’ll relax as we network and fellowship with one another in the spirit of the holidays. We’ll elect leaders tasked to direct Kentucky Farm Bureau’s efforts, set policy and prioritize legislative issues for 2013. We’ll become more informed, better equipped and increasingly motivated with each event. But most of all we will unify under the banner of “One Voice, One Family” and work towards creating a better future for Kentucky agriculture.

We hope that you enjoy your stay in Louisville and that you find yourself energized and motivated from the many informative activities planned for this year’s Annual Meeting. Thank you again for joining us, and we wish you and your families a very Merry Christmas and a happy and productive New Year.

Mark Haney
President

David L. Beck
Executive Vice President



Wednesday, December 5

COUNTY AG EXTENSION AGENTS MEETING

Suite Tower - 1st Level
Sampson Room
1:30 p.m.

REGISTRATION & INFORMATION

Suite Tower - 2nd Level
Registration Area
2:00 p.m.

BOARD OF DIRECTORS MEETING

Suite Tower - 2nd Level
Carroll/Ford Room
3:30 p.m.

VESPERS AND MEMORIAL SERVICE

Suite Tower - 2nd Level
Grand Ballroom A
7:30 p.m.

Performance by

New Vision

Anderson County

2012 Kentucky State Fair Champion Gospel Quartet



Message by

Wally Rendel

Director, Church Relations

Cincinnati Christian University

Lexington, Kentucky

Thursday, December 6

REGISTRATION & INFORMATION

Suite Tower - 2nd Level
Registration Area
8:00 a.m.

YOUNG FARMER EXCELLENCE IN AGRICULTURE AWARD CONTEST FINALS

Suite Tower - 1st Level
Wilkinson Room
8:00 a.m.

AG CHEMICAL CONFERENCE

Suite Tower - 2nd Level
Brown Room
8:30 a.m.

FORESTRY CONFERENCE

Suite Tower - 2nd Level
Combs/Chandler Room
8:30 a.m.

HORTICULTURE CONFERENCE

Suite Tower - 2nd Level
Nunn Room
8:30 a.m.

TOBACCO/FARM LABOR CONFERENCE

Suite Tower - 2nd Level
Carroll/Ford Room
8:30 a.m.

DAIRY CONFERENCE

Suite Tower - 2nd Level
Brown Room
10:00 a.m.

NATURAL RESOURCES CONFERENCE

Suite Tower - 2nd Level
Nunn Room
10:00 a.m.



Thursday, December 6

THE 2013 KENTUCKY AGRICULTURAL ECONOMIC OUTLOOK

Presented by the University of Kentucky College of Agriculture

Suite Tower - 2nd Level

Carroll/Ford Room

10:00 a.m.

COMMODITY LUNCHEON

Suite Tower - 2nd Level

Grand Ballroom B & C

11:30 a.m.

Remarks

James R. Comer, Commissioner
Kentucky Department of Agriculture



*Craig Jagger, Principal and Founder
Legis Consulting, LLC
Chevy Chase, Maryland
Speaker*

BEEF CONFERENCE

Suite Tower - 2nd Level

Carroll/Ford Room

1:45 p.m.

EQUINE CONFERENCE

Suite Tower - 2nd Level

Nunn Room

1:45 p.m.

FEED GRAINS, WHEAT & SOYBEAN CONFERENCE

Suite Tower - 2nd Level

Combs/Chandler Room

1:45 p.m.

FORAGE CONFERENCE

Suite Tower, 2nd Level

Brown Room

1:45 p.m.

RESOLUTIONS COMMITTEE MEETING

Suite Tower - 2nd Level

Breathitt Room

1:45 p.m.

WOMEN'S CAUCUSES

Suite Tower - 3rd Level

2:00 p.m.

District:

No. 2 - Wilson Room

No. 4 - Beckham Room

No. 6 - Taylor Room

District:

No. 8 - Jones Room

No. 10 - Coe Room

WOMEN'S BUSINESS MEETING

Suite Tower - 3rd Level

French Room

2:30 p.m.

HEALTH BENEFIT EXCHANGE CONFERENCE

Suite Tower - 2nd Level

Grand Ballroom B & C

3:30 p.m.

YOUNG FARMER COMMITTEE MEETING

Suite Tower - 1st Level

Laffoon Room

4:00 p.m.

GENERAL SESSION

Suite Tower - 2nd Level

Grand Ballroom A

7:00 p.m.



*Mark Haney
President
Presiding*

Outstanding Farm Bureau Youth Contest
Conducted by Betty Farris, First Vice Chair

KFB Women's Advisory Committee

County Activities of Excellence Program Recognition

Kentucky Farm Bureau Safety Challenge Awards

Communications Awards



Friday, December 7

RECOGNITION & AWARDS BREAKFAST

Suite Tower - 2nd Level
Grand Ballroom B & C
7:30 a.m.

REGISTRATION & INFORMATION

Suite Tower - 2nd Level
Registration Area
8:00 a.m.

GENERAL SESSION

Suite Tower - 2nd Level
Grand Ballroom A
9:15 a.m.



*Eddie Melton
First Vice President
Presiding*

President's Address – Mark Haney

Kentucky Farm Bureau Farmer of the Year Award

Distinguished Service Awards

Recognition of 2011-2012 LEAD Class Graduates



*Jimmy Travis
Humorist
Nashville, Tennessee*

GOLD STAR LUNCHEON

Rivue Tower – 3rd Level
Cochran and Addition Rooms
12:00 noon



*Phyllis Amyx, Chair
KFB Women's Advisory Committee
Presiding*

County Gold Star Awards Presentation

YOUNG FARMERS LUNCHEON

Suite Tower - 2nd Level
Grand Ballroom B & C
12:00 noon



*Brent Cornett, Chair
KFB Young Farmer Advisory Committee
Presiding*

Young Farmer Awards Presentation

BUSINESS SESSION

Suite Tower - 2nd Level
Grand Ballroom A
2:00 p.m.

Mark Haney, President, Presiding

Report of Credentials Committee

Discussion and Adoption of Resolutions



Friday, December 7

CAUCUSES TO NOMINATE DIRECTORS

Suite Tower
4:30 p.m.

District

- No. 1 - Brown Room, 2nd Level
- No. 2 - Breathitt Room, 2nd Level
- No. 3 - Nunn Room, 2nd Level
- No. 4 - Jones Room, 3rd Level
- No. 5 - Coe Room, 3rd Level
- No. 6 - Laffoon Room, 1st Level
- No. 7 - Carroll/Ford Room, 2nd Level
- No. 8 - McCreary Room, 3rd Level
- No. 9 - Stopher Room, 3rd Level
- No. 10 - Combs/Chandler Room, 2nd Level
- No. 11 - Taylor Room, 3rd Level
- Insurance Agents - Beckham Room, 3rd Level

PRESIDENT'S RECEPTION

Suite Tower - 2nd Level
Grand Ballroom B & C
5:45 p.m.

GENERAL SESSION

Suite Tower - 2nd Level
Grand Ballroom A
7:00 p.m.



*J. Fritz Giesecke
Second Vice President
Presiding*

Discussion Meet Finals
Sierra Enlow, LaRue County
2011 Discussion Meet Winner, Moderator

Variety Showcase
Conducted by Vickie Bryant, Second Vice Chair
KFB Women's Advisory Committee

Saturday, December 8

PUBLIC AFFAIRS BREAKFAST

Suite Tower - 2nd Level
Grand Ballroom B & C
7:30 a.m.



*The Honorable Jeff Hoover
Republican Leader
Kentucky House of Representatives
Speaker*

BUSINESS SESSION

Suite Tower - 2nd Level
Grand Ballroom A
9:00 a.m.

Mark Haney, President, Presiding



*Executive Vice President's Report
David S. Beck*



*Address by
The Honorable Mitch McConnell
Republican Leader, U.S. Senate (Invited)*

Report of Credentials Committee

Approval of Minutes of Last Annual Meeting

Election of Directors

Election of Officers
10:00 a.m.

Discussion and Adoption of Resolutions

Unfinished Business

BOARD OF DIRECTORS MEETING

Suite Tower - 2nd Level
Carroll/Ford Room

HEADQUARTERS

Suite Tower - 2nd Level
Clements Room

NEWS ROOM

Suite Tower - 2nd Level
Willis Room

RADIO & TELEVISION ROOM

Suite Tower - 2nd Level
Collins Room

SPONSORS & GIFTS

AT&T Kentucky
Case IH
Crop Production Service
Farm Credit Services of Mid-America
Jacobi Sales
Kubota Tractor Corporation
Misty Morn Safe Co.
New Holland North America
Pioneer Seed
Premier Crop Insurance
Republic Bank
Southern States Cooperative
Southern Farm Bureau Life Insurance Company
Kentucky Farm Bureau Insurance Companies
Kentucky Farm Bureau Federation

CREDENTIALS COMMITTEE

Mr. David Chappell, Sparta, Chair
Mr. Randall Heath, Hickory
Mr. Larry Thomas, Elizabethtown

CREDENTIALS DESK SCHEDULE

Suite Tower, 2nd Level
Window Seat Alcove Near Registration

Wednesday, December 5	2:00 p.m. – 3:30 p.m.
Thursday, December 6	8:00 a.m. – 11:30 a.m. 1:30 p.m. – 5:00 p.m.
Friday, December 7	8:00 a.m. – 12 noon 1:00 p.m. – 1:15 p.m. 2:00 p.m. – 4:00 p.m. At the conclusion of district caucuses
Saturday, December 8	8:00 a.m. – 8:45 a.m.

HOSPITALITY

Sponsored by Kentucky Farm Bureau Insurance Companies

Suite Tower - 2nd Level - Exhibit Area

Thursday, December 6	8:00 a.m. - 10:00 a.m. 2:00 p.m. - 4:00 p.m.
----------------------	---

TRADE SHOW

Suite Tower - 2nd Level - Exhibit Area

Exhibits will be open -- Thursday, December 6	8:00 a.m. - 5:00 p.m.
--	-----------------------



KENTUCKY FARM BUREAU’S COUNTRY STORE

Suite Tower - 2nd Level
Hallway Outside Exhibit Area

Thursday, December 6 8:00 a.m. - 5:00 p.m.
Friday, December 7 8:00 a.m. - 4:00 p.m.

COUNTY ACTIVITIES OF EXCELLENCE PROGRAM

Bracken County
Daviess County
Mercer County
Nelson County
Union County

RESOLUTIONS COMMITTEE

Eddie Melton, Sebree, Chair
Phyllis Amyx, Campton
Jason McGlone, Grayson
Mark Paschall, Murray
Glenn Howell, Fulton
Gerry Hayden, Calhoun
John Kuegel, Owensboro
Kevin Mobley, Elizabethtown
Patrick Daugherty, Morgantown
Maurice Heard, Rockfield
Larry P. Clark, Greensburg
Mike Cocanougher, Versailles
David A. Bird, Lawrenceburg
Mark Kinsey, Crittenden
Robert Maurer, Burlington
Colby Guffey, Albany
Wes Hargis, Science Hill
Kenneth Rice, Irvine
Tim Brandenburg, Richmond
James Brumagen, Mt. Olivet
Rob McClanahan, Butler
Randall Wood, Flemingsburg
Norwood Caudill, Morehead
Berkley Mark, Mt. Sterling
Don Miniard, Bledsoe
Holden Williams, Bays



EXECUTIVE COMMITTEE & BOARD OF DIRECTORS

Mark Haney, Nancy, President

Eddie Melton, Sebree, First Vice President

J. Fritz Giesecke, Horse Cave, Second Vice President

David S. Beck, State FB Office, Executive Vice President

Randall Heath, Hickory

Tripp Furches, Murray

Kelly Thurman, Livermore

Mary Kate Kordes, Central City

Larry Thomas, Elizabethtown

Patrick M. Henderson, Irvington

Russell Poore, Russellville

Jay Coleman, Cave City

Scott Travis, Cox's Creek

Randy Chrisman, Lawrenceburg

Joe Paul Mattingly, Raywick

David Chappell, Sparta

Terry Rowlett, Campbellsburg

Danny Wilkinson, Columbia

Kim McCoy, Burkesville

Terry R. Gilbert, Danville

David L. Campbell, Stanford

Alex Barnett, Cynthiana

Shane Wiseman, Winchester

David McGlone, Grayson

Carroll Amyx, Campton

Charlie Benge, London

Bige Hensley, Manchester

Marshall Coyle, Immediate Past President, Owingsville

Phyllis Amyx, KFB Women, Campton

Brent Cornett, KFB Young Farmers, London

Mickey Sirls, KFB Insurance Agents, Benton

Dr. M. Scott Smith, UK College of Agriculture, Lexington

Brandon Davis, Kentucky Department of Education, Lawrenceburg

Kevin Lyons, Kentucky Association of County Agricultural Agents,
Tompkinsville



ANNUAL MEETING ARRANGEMENTS COMMITTEE

David S. Beck

Overall Program/General and Business Sessions

Katherine Fugate

Annual Meeting Manager

Rachel Thomas

Recording Secretary

Andrew Brothers and Connie Britt

Voting Delegate Certification

Beth Wisman

Registration Coordinator and Ticket Sales

Kelli Jolly

Headquarters

Tom Logue

Trade Show and Convention Hall Manager

Dave Metzgar

Sound and Technical Support

Susie Tanner

Leadership Enhancement for Agricultural Development (LEAD)
Program

B. Todd Bright, Dan Smaldone, Roger Nesbitt,

Bob Shrader and Matt Hilton

Communication and Public Relations

Carilynn Gravatte

Social Media

Melissa LaRoche and Brittany Bennett

News Room

Jeff Harper

Public Affairs Breakfast and Resolutions

Sara Stivers

Resolutions

Mike Tobin

Commodity Luncheon and Conferences

Fran McCall

Commodity Conferences

Ed McQueen

Market Information and County Activities of Excellence Program

Bryan Alvey

Local Issues and Policy Development

L. Joe Cain

National Issues and Political Education

David Davis, Scott Christmas and Mark Lyle

Vespers and Memorial Service

Matthew Ingram

Recognition and Awards Program

Stacy R. Lowe

Young Farmer Activities

Scott Christmas

Agriculture Education and Women's Activities

Dwight Greenwell

Member Services

Brad Smith

Transportation



AG CHEMICAL CONFERENCE

Suite Tower - 2nd Level
Brown Room
8:30 a.m.

“2013 Chemical Outlook”

Brad Reed, Owner
KOVA
Greensburg, Indiana

Joe Kordes, Sales & Technical Support Representative
Direct Resources AG, Inc.
Central City, Kentucky

FORESTRY CONFERENCE

Suite Tower - 2nd Level
Combs/Chandler Room
8:30 a.m.

“Lease or Fee-Based Hunting in Kentucky”

Tom Barnes, Ph.D., Extension Professor and
Extension Wildlife Specialist
University of Kentucky College of Agriculture
Lexington, Kentucky

“An Update on Kentucky’s Threatened and Endangered Species: Implications for Forestry and Agriculture”

Michael A. Floyd, Ph.D., Fish and Wildlife Biologist
U.S. Fish and Wildlife Service
Frankfort, Kentucky

HORTICULTURE CONFERENCE

Suite Tower - 2nd Level
Nunn Room
8:30 a.m.

“Making the Connection: Kentucky’s Farm to School Program”

Tina Garland, Farm to School Program
Kentucky Department of Agriculture
Frankfort, Kentucky

“Adding Value to Homegrown Produce”

Shadrick Adams, Food Safety Program
Division of Public Health Protection and Safety
Frankfort, Kentucky

“A Roadside Market Spotlight – Bi-Water Farm & Greenhouse”

Stephen Fister, Owner
Bi-Water Farm & Greenhouse
Georgetown, Kentucky

TOBACCO/FARM LABOR CONFERENCE

Suite Tower - 2nd Level
Carroll/Ford Room
8:30 a.m.

“Universal GAP Assessment Program for Tobacco Production”

Jay Boyette, Commodities Director
North Carolina Farm Bureau
Raleigh, North Carolina

“Employer Reporting and Recordkeeping Requirements”

Donna Graves, H-2A Program Coordinator
Michelle Catlett, CPA
Agricultural Workforce Management Association (AWMA)
Lexington, Kentucky

“Tobacco Market Outlook”

William Snell, Ph.D.
Extension Professor for Agricultural Economics
University of Kentucky College of Agriculture
Lexington, Kentucky

DAIRY CONFERENCE

Suite Tower - 2nd Level
Brown Room
10:00 a.m.

“Telling Ag’s Story”

Amanda Trice, Director of Communications & Public Relations
Southeast United Dairy Industry Association, Inc.
Atlanta, Georgia

“Effective Use of Social Media”

B. Todd Bright, Director, Communication Division
Kentucky Farm Bureau Federation
Louisville, Kentucky

NATURAL RESOURCES CONFERENCE

Suite Tower - 2nd Level
Nunn Room
10:00 a.m.

“The New BMP 590”

Karen Woodrich, Kentucky State Conservationist
Natural Resources Conservation Service (NRCS)
Lexington, Kentucky

“Nutrient Management and the Kentucky Ag Water Quality Plan”

Steve Coleman, Director
Kentucky Conservation Service
Frankfort, Kentucky

“Developing Your Ag Water Quality Plan” – Work Session

Amanda Gumbert, Extension Specialist for Water Quality
University of Kentucky College of Agriculture
Lexington, Kentucky

Steve Higgins, Ph.D., Director of Animal &
Environmental Compliance
University of Kentucky College of Agriculture
Lexington, Kentucky

THE 2013 KENTUCKY AGRICULTURAL ECONOMIC OUTLOOK

Presented by the University of Kentucky College of Agriculture
Suite Tower - 2nd Level
Carroll/Ford Room
10:00 a.m.

Welcome by Mark Haney, President, Kentucky Farm Bureau

Panel Discussion by UK Faculty – Dean Scott Smith, Moderator

Introductions – Leigh Maynard
U.S. and Kentucky Ag Economy/Tobacco Outlook – Will Snell
Livestock Outlook – Kenny Burdine
Horticulture Outlook – Tim Woods
Forestry Outlook – Jeff Stringer
Grains Outlook – Cory Walters
Income Implications for Kentucky Farms and
Farm Households – Jerry Pierce

BEEF CONFERENCE

Suite Tower – 2nd Level
Carroll/Ford Room
1:45 p.m.

“Maximizing Heterosis in Commercial Herds”

Darrh Bullock, Ph.D., Extension Professor, Beef Cattle Genetics
University of Kentucky College of Agriculture
Lexington, Kentucky

“Rebuilding the Cow Herd”

Nevil Speer, Ph.D., Professor of Animal Science
Western Kentucky University
Bowling Green, Kentucky

“Developing Feeding Management Solutions – Winter 2012-2013 and Beyond”

Jeffrey W. Lehmkuhler, Ph.D., Assistant Extension Professor
& Extension Beef Cattle Specialist
University of Kentucky College of Agriculture
Lexington, Kentucky

EQUINE CONFERENCE

Suite Tower – 2nd Level
Nunn Room
1:45 p.m.

“The Kentucky Equine Economic Impact Study”

Ginny Grulke, Executive Director
Kentucky Horse Council
Lexington, Kentucky

“Equine West Nile – Kentucky History 2001-2012”

Rusty Ford, Equine Programs Manager
Kentucky Department of Agriculture
Frankfort, Kentucky

“News from UK’s College of Ag Equine Programs”

Robert J. (Bob) Coleman, Ph.D.
Assistant Extension Professor for Equine
University of Kentucky College of Agriculture
Lexington, Kentucky

FEED GRAINS, WHEAT & SOYBEAN CONFERENCE

Suite Tower – 2nd Level
Combs/Chandler Room
1:45 p.m.

“The 201? Farm Bill”

Aleta Botts, Program Coordinator for Agriculture Policy
University of Kentucky College of Agriculture
Lexington, Kentucky

“Crop Insurance: What We Have and What’s New”

Cory Walters, Ph.D.
Assistant Extension Professor for Agricultural Economics
University of Kentucky College of Agriculture
Lexington, Kentucky

FORAGE CONFERENCE

Suite Tower – 2nd Level
Brown Room
1:45 p.m.

“How to STRETCH Short Hay Supplies”

Jeffrey W. Lehmkuhler, Ph.D., Assistant Extension Professor
& Extension Beef Cattle Specialist
University of Kentucky College of Agriculture
Lexington, Kentucky

“How I Produce and Manage Forages”

Brent White, Producer
Eddyville, Kentucky

“Prepare NOW for More and Better Pasture/Hay in 2013”

Garry Lacefield, Ph.D., Extension Forage Specialist
University of Kentucky College of Agriculture
Princeton, Kentucky

HEALTH BENEFIT EXCHANGE CONFERENCE

Suite Tower – 2nd Level
Grand Ballroom B & C
3:30 p.m.

“Kentucky Health Benefit Exchange”

Carrie Banahan, Executive Director, Office of Health Policy
Kentucky Cabinet for Health and Family Services
Frankfort, Kentucky

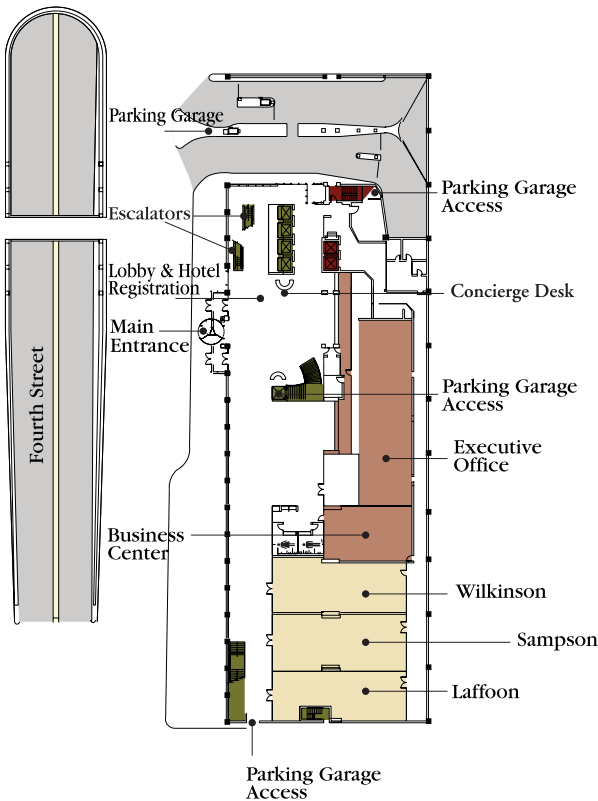
“Anthem Update”

Lawrence Ford, Director, Kentucky Government Relations
Anthem Blue Cross/Blue Shield
Louisville, Kentucky

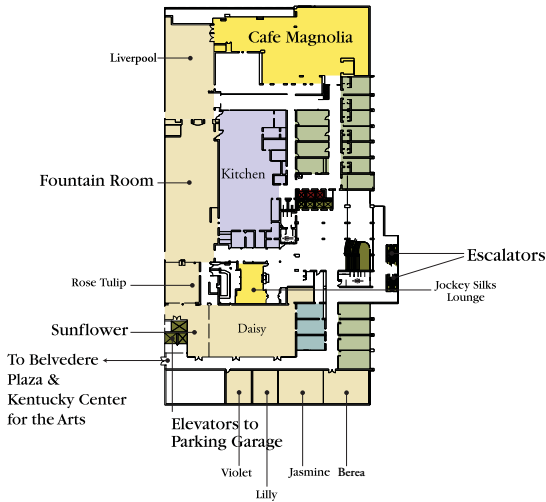
“Healthcare Reform and the Impact on Agriculture”

Leon Sequeira, Senior Counsel
Seyfarth Shaw LLP
Washington, D.C.

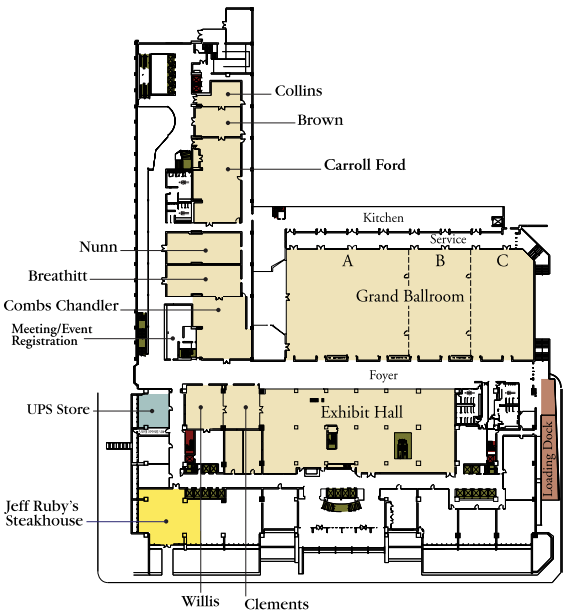
SUITE TOWER



RIVUE TOWER



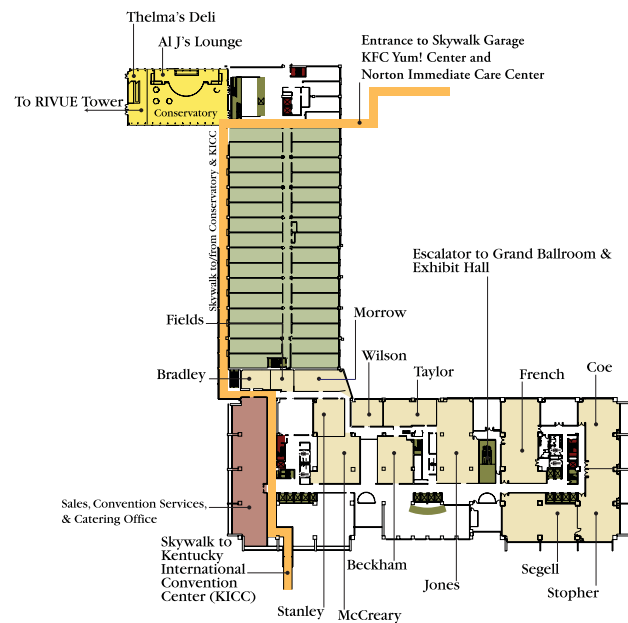
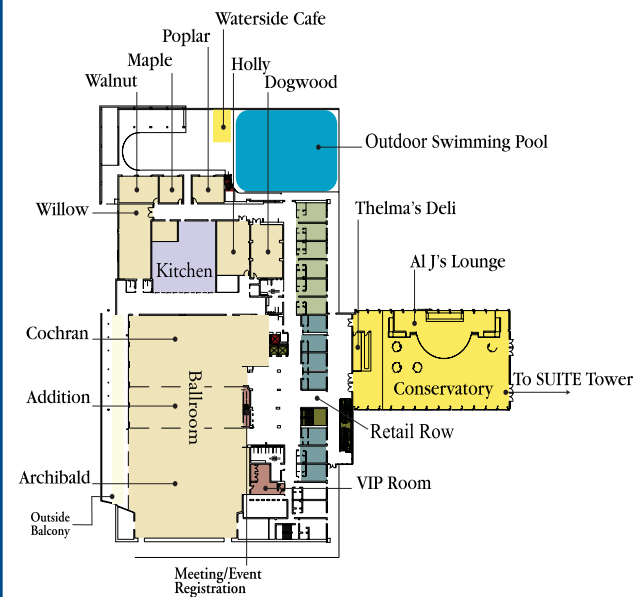
SUITE TOWER



Retail	Guest Elevators, Stairs & Escalators	Escalator
Meeting Rooms	Service Elevators & Stairs	Elevator
Skywalk	Restaurants & Lounges	Men's Restroom
Guest Rooms & Apartments	Stairs	Women's Restroom

RIVUE TOWER

SUITE TOWER



Retail		Skywalk		Guest Elevators, Stairs & Escalators	
Meeting Rooms		Guest Rooms & Apartments		Service Elevators & Stairs	

Restaurants & Lounges		Escalator		Men's Restroom	
Stairs		Elevator		Women's Restroom	



Notes

This image shows a vertical rectangular sheet of white paper with horizontal blue ruling lines. The lines are evenly spaced and run across the width of the page. There are approximately 20 lines visible. The paper has a slight shadow on its right side, suggesting it's resting on a surface.

Future Dates

KENTUCKY FARM BUREAU FEDERATION ANNUAL MEETINGS

December 4-7, 2013 Galt House, Louisville

December 3-6, 2014 Galt House, Louisville

December 2-5, 2015 Galt House, Louisville

AMERICAN FARM BUREAU FEDERATION ANNUAL MEETINGS

January 13-16, 2013
Nashville, Tennessee

January 12-15, 2014
San Antonio, Texas

January 11-14, 2015
San Diego, California





Scan this QR code and “Like” Kentucky Farm Bureau on Facebook.

You can also keep up to date with annual meeting by following us on Twitter @kyfb or #kyfbam12.